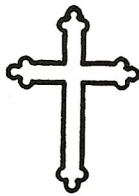


90
75th Anniversary

Taylor Lutheran Congregation



1885 - 1960

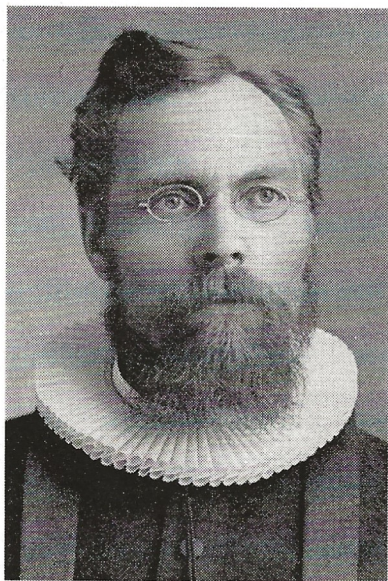
Taylor, North Dakota

It is with much gratitude to God that we are privileged to observe the Seventy-Fifth Anniversary of the congregation of Taylor Evangelical Lutheran Church. During these many years, the Word of God has been preached and taught in its purity. Through this and the administration of the Sacraments, God has created and sustained spiritual and eternal life in many, many, living and dead.

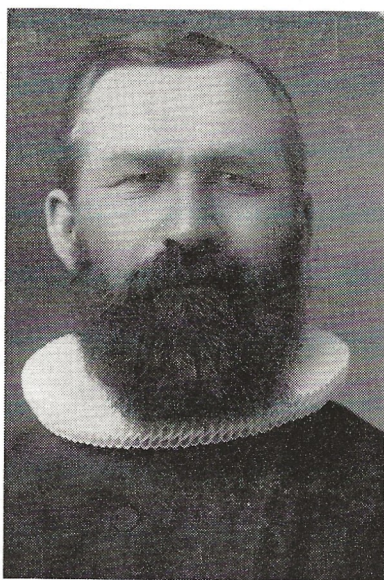
We wish hereby to express the debt, inspirational, spiritual, and material, that we owe to the many faithful workers in the pulpit, in the pew, in the Sunday School, in the Vacation Bible School, and in the home, living and dead, who labored, prayed, and sacrificed in order to build, not only a church; but, what is more important, a congregation, whose Foundation and Corner Stone is Christ. It is for us, the present and future members and pastors, under God, to build a beautiful and enduring superstructure of living stones upon the foundation which has been laid, always remembering the words of Christ, "Without Me, ye can do nothing". Let us work while it is day; "the night cometh, when no man can work!". Ours is the promise that "They that sow in tears shall reap in joy".

My wife and I wish hereby to thank all concerned for the many evidences of Christian love and helpfulness shown us and our family during the fifteen years we have been among you.

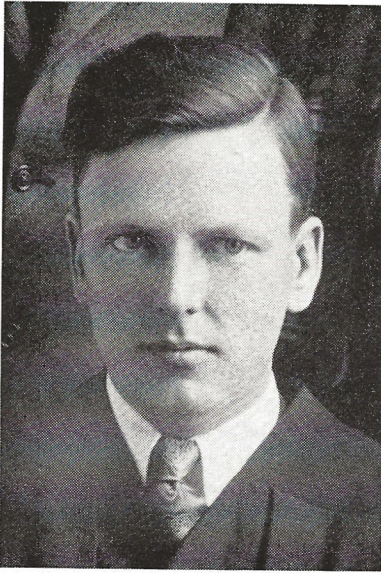
In His Name,
Emil A. Grefthen, Pastor.



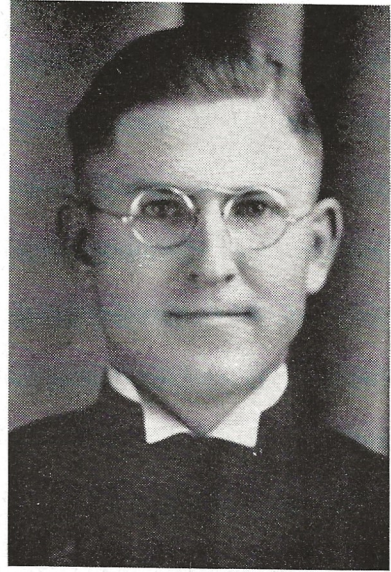
Rev. Thor K. Gaustad
1893-1906



Rev. Thorvald H. Larsen
1907-1932



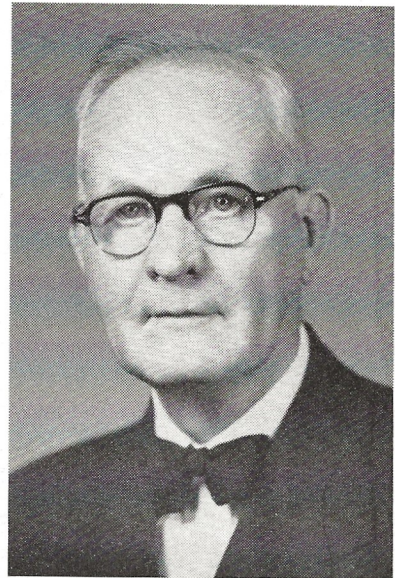
Rev. James Kaupang
1933-1934



Rev. W. L. Ellickson
1935-1940



Rev. Earl M. Sletten
1940-1945



Rev. E. A. Grefthen
Since 1945

History of the Taylor Lutheran Congregation

On May 19, 1885, a group of Lutherans of Scandinavian origin met at the home of Erland Paulson (the N. P. section house) in Taylor, North Dakota, for the purpose of organizing a congregation under the leadership of Pastor O. J. Norby of Sims. Officers elected were: deacons, Erland Paulson, Martin Breum and Engebret Torgerson, Trustees: Johan Fredericks, Ole H. Breum and Ole Peterson, treasurer: Johan Fredericks; and secretary Ole Peterson. Other charter members included the following and their families: Andreas Knudson, Lewis Peterson, Paul P. Ziner, Ole P. Ziner, Lise Olsen, Christen Paulsen, Halvor Torgerson, Ole Olsen, and Rolf Bakken.

Pastor Norby served congregations at Sims and Mandan and other preaching places as well and was able to hold services at Taylor only once a month. The village of Sims has all but disappeared from the map but in 1885 it was the biggest town between Mandan and Dickinson and had had a Lutheran church since 1880. The village of Taylor was only two years old in 1885. The country around was just being settled. Pastor Norby had just come to Sims. His predecessor had held services at one of the Breum homes in October, 1884, which is the first recorded Lutheran services in Taylor.

The congregation adopted its first constitution in 1888. As its rule of discipline it was decided to use the 18th chapter of Matthew. This rule unfortunately had to be applied in several cases. The days of the Wild West were still not over.

Immigration was rapid during the late 80's and 90's. By 1900 the following and their families had joined the congregation: A. A. Rosendahl, Torger B. Elken, Knud Knudson Sr., Knud Knudson Jr., Mikkell A. Onsager, Tollef Tollefson, Ole L. Quanrud, John H. Breum, Nils Bruvold, T. Thorsteinson, Borger T. Elken, Lars. L. Haugen, Andy Knudson, Peder Christianson, Kittil Eiken, Gulbrand M. Vinger, Martin Olson, Mads Jespersen, Peder Johnson, Ole Aslakson, Aslak O. Nasset, F. W. Rynning, Andrew O. Nasset, Torger H. Myran, John Gunwall, L. L. Lewis, Sam Vaagen, Otto Larson, Andrew Esse, Abraham Stanger. Emigration was also constantly going on which is shown by the record that in 1897 only three of the charter members still belonged to the congregation.

In 1893 Pastor Norby resigned to accept a call to Chicago, Ill., and L. L. Haugen and T. Thorsteinson were appointed to a call committee to meet with the other congregations. The congregation promised to pay \$150 annually toward the new pastor's salary.

Pastor Thor K. Gaustad of Vining, Minnesota, accepted the call. He had already preached once in Taylor, Dec. 26, 1892. He continued

the work of Pastor Norby, serving Lutheran settlers along the Northern Pacific from Mandan on west at least as far as Belfield. During his pastorate the Taylor Lutheran church was built and dedicated.

In 1906 Pastor Gaustad resigned to accept a call to Enderlin, North Dakota. A special meeting of the congregation was called to appoint a call committee and it was decided that the Taylor congregation should try to call a pastor of its own, although everyone realized how difficult it would be for such a small group to support a pastor. Rev. Gaustad told the meeting he had been receiving \$575.00 annually, including \$200 from Taylor, and had been spending about \$300 for railroad fare in serving his farflung parish. He was in favor of the idea of calling a separate pastor.

The problem of supporting a new pastor was partly solved when the congregation received a letter from Treasurer H. C. Holm of the ULC offering \$300 toward the pastor's salary if he would be permitted to devote part of his time to missionary work.

Pastor Thorvald H. Larsen of Ada, Minnesota was recommended by President Dahl of the ULC and was called by a motion which passed unanimously. The congregation promised to pay the pastor \$400, in addition to the \$300 from the Home Mission fund, and \$100 promised by the small Belfield congregation. He was also to have a free parsonage.

Having a resident pastor made a parsonage necessary and after some discussion as to whether to buy or build, a committee consisting of Paul Ziner, Eruand Paulson, Aslak O. Nasset, John Kyseth and Ole Kyseth was appointed to buy a parsonage. They bought the house which is still serving as our parsonage, for \$3300, most of which had to be borrowed.

The Rev. Th. H. Larsen arrived in Taylor early in 1907, after delays due to the hard winter, and began twenty five years of service to Taylor and the entire Slope area. He had already been in the parish ministry for twenty years and had accepted a call that must have been a real challenge at the age of fifty one. He was able to hold services at Taylor twice a month, devoting the other Sundays to his mission work. He was also able to devote some time to instructing the young people, which was one reason the congregation had wanted a resident pastor.

Pastor Larsen's main objective in his mission work was to provide services for people of Lutheran background who were moving into the new country, and to help them organize congregations which could eventually become self-supporting and call pastors of their own. He was well suited to the work by personality, physique and education.

He was not easily discouraged and was tough enough to take the physical beating involved in constant travel with horses over the wide open spaces of western North Dakota in all kinds of weather. He was able to preach fluently in English, Norwegian and German.

During his ministry he organized congregations at Ridgeway and Marshall, Dunn Center, Halliday, Vang, Gorham, and other places as well as providing services for other previously organized congregations which as yet had no pastors of their own. At many of these places he met former members of the Taylor congregation who had moved on as more new territory opened up, especially in Dunn County and north and south of Belfield. It is estimated that he traveled 100,000 miles with horses during these years. In late years his sons chauffeured him to his preaching places in an automobile. By the early twenties his mission work was pretty well completed and he could devote himself to the Taylor parish.

During Rev. Larsen's pastorate the Taylor congregation underwent a gradual transition from Norwegian to English. At first all services and instruction were in Norwegian but as early as 1908 there were two confirmation classes, one for young people who did not understand Norwegian well enough to learn the catechism and one for those whose parents wished them to be confirmed in Norwegian. The use of Norwegian steadily decreased and at the 1926 annual meeting a motion passed that sermons at both morning and evening services be ALL ENGLISH (emphatically recorded in capital letters by the secretary).

At Christmas 1931, Pastor Larsen submitted his resignation, due to age and poor health, to become effective the following June 1. He resided at his home near Taylor until his death November 30, 1935.

Following Rev. Larsen's resignation a call was extended to the Rev. James Kaupang, a recent graduate of Luther Seminary. Pastor Kaupang's ministry at Taylor was cut short by illness after only two years. He and his wife were very active in working with the young people and the Luther League became well established during this time. It was Pastor Kaupang who translated the congregation's constitution into English. Rev. Kaupang has only recently recovered his health to some extent.

After Rev. Kaupang's resignation in 1934, the Taylor parish called the Rev. Waldo L. Ellickson, who had been at Taylor previously as a student pastor. Rev. Ellickson was Taylor's pastor during the drought and depression years which proved to be years of spiritual growth under his leadership. He was one of the founders of the Badlands Bible Camp which has been a great influence for good in the

lives of many young people. During the early years the camp met at the H T ranch near Amidon and the campers brought back stories of adventures with flood, mud and blown down tents as well as spiritual inspiration. Pastor Ellickson left Taylor at the beginning of 1940 for Britton, South Dakota. Since 1945 he has been a home mission pastor on the west coast and has founded several new congregations.

After Rev. Ellickson's resignation the congregation represented by a call committee consisting of Harold Jespersen, Spencer Bobb and Leo Haugen extended a call to Earl M. Sletten who was then completing his senior year at Luther Seminary. He had previously been a student pastor at Taylor. Rev. Sletten was installed as pastor August 4, 1940, and served until January 28, 1945, when he accepted a call to New Rockford, North Dakota. Since 1949 he has been the pastor of the Kindred, North Dakota parish. Rev. Sletten encouraged a number of the congregation's young people to attend church colleges.

This was the period of World War II and there was a sizable number of stars on the congregation's service flag.

The Rev. Emil Grefthen preached his first service at Taylor May 6, 1945, and was officially installed the following Sunday by the Rev. O. L. Olsrud of Beach. Rev. Grefthen had previously served parishes at Edgerton, Wis; Portland, Maine; Oconomowoc, Wis; and Milford, Iowa.

Rev. Grefthen was one of the promoters of St. Luke's Home in Dickinson and has served as one of the officers of the board since its organization. He has also been active in the work for the coming merger with the UELC and ALC and is at present serving on a committee which is laying the groundwork for the new Western North Dakota District. On October 27, 1957, the congregation honored Pastor Grefthen as he celebrated the fortieth anniversary of his ordination.

In 1955 the congregation took part in a Preaching-Teaching-Reaching Mission in which efforts were made to discover the unchurched members of our community and encourage them to take part. Since 1956 the Every-Member Visit has been an annual event; this encourages members to commit themselves to a more active part in church work. In recent years also there have been series of Religious Emphasis meetings preceded by small group Bible Study meetings in the homes of the congregation.

Present officers of the congregation are: president, Rev. Grefthen; vice-president, Leo Haugen; secretary-treasurer, Elmo Elkins;

trustees, Frank Madson, Leland Brand, and William Jespersion; and deacons, Helge Myran, Lee Hutchinson, and Kenneth Knudson.

The Taylor congregation is grateful to God for the faithful pastors He has sent among us, who have served us so faithfully and diligently down through the years, often in the most discouraging circumstances.

Synodical Affiliation

When the congregation was organized in 1885 it did not officially join any church body although Pastor Norby was a member of the Norwegian Augustana Synod. When that body merged with two other Norwegian Lutheran groups in 1890 to form the United Lutheran Church the Taylor congregation was invited to join but decided to remain independent. The secretary's minutes of the meeting which considered the invitation do not give any reason, only "motion failed" but the reason probably was that the members, coming as they did from various older settlements, had backgrounds in various of the Norwegian Lutheran Synods which had been involved in numerous doctrinal disagreements ("kirkestriden") during the preceding quarter century. Officially joining one Synod perhaps would have antagonized members who had been brought up in another. However that may be, the congregation cooperated with the ULC, contributed to its budget and when the church was dedicated in 1905, invited the ULC president and other dignitaries to officiate. When the congregation called its first resident pastor, Rev. Larsen, in 1907, part of his salary was paid by ULC home mission funds.

When the United Lutheran Church, the Hauge Synod and the Norwegian Synod merged into the Norwegian Lutheran Church in America in 1917 the Taylor congregation joined the body, which has been known as the Evangelical Lutheran Church since 1946.

The ELC will merge with the United Evangelical Lutheran Church and the American Lutheran Church January 1, 1961, to form The American Lutheran Church, and the Taylor congregation has voted its approval of the merger.

Our Church Home

The first Lutheran services at Taylor were held in private homes. As the congregation grew, larger meeting places became necessary and services were held in the large freight room of the old depot, in L. L. Lewis' store, and sometimes out of doors when the weather was good.



After Taylor's first school was built it was the regular meeting place until the church was built.

Definite work toward building a church began in March, 1897, when the circulation of a subscription list for a building fund was begun. The Ladies Aid already had raised some money for this purpose. At the congregation's business meeting that fall (November 21) the list was turned in with a total of \$582 in pledges of which \$86 was already paid in. A building committee consisting of John Gunwall, Torger Myran, Borger T. Elken, L. L. Lewis, and Abraham Stanger was appointed. Their first duty was to locate a building site and report back to a special meeting November 30. At this meeting they reported that they had chosen lots 7 and 8 in Block 31 and that these lots had been donated by the owner, Martin O. Dyvsveen. Plans for the building were submitted by H. Halvorson and approved by the congregation. Another committee was appointed to meet with the Ladies Aid to request them to pay into the church treasury the money they had in their building fund. Building was begun the next spring and before the end of 1898 the church was in use although not completely finished. The altar, pulpit, and pews were ordered in 1900. The costs of the building and furniture of course far exceeded the amount available from the building fund and a debt was incurred which it took many years to pay off.

By 1905 the church was pretty well finished inside and out and arrangements were made for its dedication, by a committee consisting of Pastor Gaustad, John Gunwall, T. H. Myran, Hans Siverts and Kittil Eiken. The dedication services September 21, 1905, were conducted by the Rev. T. F. Dahl, president of the ULC. At the annual meeting later that fall a motion was passed thanking the "kvindeforening" and "pigeforening" for their help in preparing the church for the dedication.

The building has been well maintained down through the years and has been remodeled from time to time in various ways as the need has arisen. In the mid-twenties a full basement was dug under the church to provide a large meeting room and space for a heating plant. During the thirties' the old light fixtures were replaced and stained glass windows were installed, honoring the former pastors and various pioneer families. About 1950 the vestibule was remodeled to provide easier access to the church basement.

The latest project has been the modernization of the interior of the church, which was completed in 1959. All the old dark wainscotting and wood work was remodeled and the ornate high altar back was replaced with a large wooden cross donated by Leo Bauer. The work

was done by men of the congregation under Mr. Bauer's direction. Our church now presents as beautiful and modern an appearance as any a half century newer.

Financing Our Church's Work

During the congregations early years it was the duty of the treasurer and the trustees to contact the individual members and take up a subscription for the expenses of the church. At this time the chief expense was the pastor's salary and it sometimes fell a year or two behind. Times were bad and the settlers were just getting established. Later the congregation contracted sizable debts from the building and furnishing of the church and the purchase of the parsonage. The money raising efforts of the Ladies Aid were a big help in paying these debts but subscriptions for this purpose were necessary every year as well as for current expenses.

In 1909 the congregation was divided into five districts with collectors appointed for each. The districts were: 1. Ridgeway (also referred to as Iowa district, or Gunwall district), 2. Marshall (also referred to as Kyseth district), 3. village of Taylor, 4. Elken district, 5. Enger (also called Albert Lea district). This arrangement continued for many years, with the collectors making annual calls to take care of any deficit left by the regular Sunday collections. The envelope system was introduced by Rev. Kaupang in 1933. It was necessary to conduct special drives to meet occasional deficits until about 1950. Since the Every Member Visit has been practiced, the members have become more aware of the stewardship of both talent and treasure and it has been possible to increase the congregation's budget. Besides local expenses the congregation has always contributed its share to the synodical budget. It also contributes to such projects as the Badlands Bible Camp and St. Luke's Home. During the last few years a building fund has been begun for the purpose of eventually replacing the parsonage. The special Seventy-fifth Anniversary Thank offering has been dedicated for this purpose.

Church Music

Music has always played a large part in the worship service of Taylor Lutheran Church.

A reed type organ was used from the first. Then a piano was obtained and in later years we have acquired an electric organ. For some years the old reed organ and piano were used together.

The organists serving some for a shorter period and others for a

longer period of time were: Marie Paulson, Selma Nasset, Thea Torgerson, Elsie Larsen, Theresa Myran, Genevieve Howe, Gladys Kyseth, Grace Larsen, Mrs. S. Elkins, Mrs. Grefthen, Susan Madson, Sharon and Jean Marcusen and Daphne Juhala.

During the early years Mr. Rynning was the "Klokker" or song leader. He stood at the front facing the congregation and with his fine strong voice led the singing from "Lanstads' Psalme Bok", in the Norse language.

Later on when the English language was adopted we used the Lutheran Hymnary. Now we have the new Hymnal and Service Book which is being used by most Lutheran churches.

From time to time there have been choirs under different directors, Mr. Rynning being the first. At one time we had a children's choir. Pastor Ellickson and Mrs. Grefthen also trained choirs for special events, and occasions, especially Christmas Cantata.

Singing is always stressed in our Sunday School, seeking to instill in our children the love for good hymns. It is an effective way of expressing our joy and Gladness.

The psalmist urges "Make a joyful noise unto the Lord, all ye lands. Come before His presence with singing. Be thankful unto Him and bless His Name".

Taylor's Sons in the Ministry

Willard L. Conradson is the only son of the Taylor congregation in the ministry thus far. He was ordained at Taylor in June, 1949, after graduating from Luther College and Luther Seminary. After several years in the parish ministry at Fairfax, Minn., he became an Air Force chaplain and is now serving in Japan. He is a son of Mr. and Mrs. A. H. Conradson.

David Egeland, also a graduate of Luther College, is currently serving as an intern at Janesville, Wisconsin, and will graduate from Luther Seminary in the class of 1961. He is a son of Mr. and Mrs. Wm. Egeland.

Other Congregations of our Parish

Many of the early members of the Taylor congregation lived along Knife River. The distance made it very difficult for them to attend services regularly although many of them were among the most active members and most generous contributors to church expenses.

In 1915 the northwestern part of the congregation separated and built its own church, the Ridgeway Lutheran Church, named for the community in Iowa many of its members had come from. The Ridgeway Lutheran church is still a part of the Taylor parish.

In 1931 the northeastern part of the congregation followed the same course and the Marshall Lutheran Church was organized. Marshall Lutheran Church was also a part of the Taylor parish until 1955 when it was transferred to the new Halliday parish as part of a realignment program.

The Spring Creek Lutheran Church at Dodge, founded 1910, was also part of the Taylor parish for some twenty years until it too was transferred to Halliday. Recently this congregation merged with the ALC congregation at Dodge and is now part of the Golden Valley parish.

As a part of the 1955 realignment, St. John's Lutheran Church (ALC) of Richardton became part of the Taylor parish.

These parish realignments have provided better service for the congregations and eased the burden of the pastors who previously conducted as many as four and five services every Sunday when weather and roads permitted.

Ladies' Aid History

The History of the Taylor Lutheran Ladies' Aid as gleaned from the Taylor W. M. F. historical album written by various members of the organization down through the years.

The Taylor Lutheran ladies aid has been in existence about seventy years. The date of the actual organization seems to be uncertain but the women of the Taylor parish, which later included the Ridgeway and Marshall communities worked together for the good of the church before any formal organization had taken place.

The pioneer women knew that in order to establish a congregation and erect a house of worship they must do their part, and so in the early days that was their aim, they also tried to carry on some mission work.

The first meetings were held in the homes and not at regular intervals for there was no resident pastor.

There is record of one meeting which was held before the year of 1900 at the Lars Haugen home three miles northwest of Taylor which is now the home of his grandson, Leo Haugen and family. The people came in the morning, they came in wagons or in any vehicle



Ladies Aid meeting at Haugland farm—1907

they had, some on horseback and some on foot; perhaps the horses weren't tame enough for the women to drive or it was too far, at any rate the whole families came and made a day of it. Dinner was served at noon and a cup was placed on the table for donations; when the first meeting was held it was agreed that the meal should consist of three things and coffee but it wasn't long until chicken dinners were served, perhaps that was another reason that the men could find time to come. Here are the names of some of the people and their families who were present: Mr. and Haugen, Mr. and Mrs. Ingebretson, Mr. and Mrs. Engen, Mr. and Mrs. Paulson, Mr. and Mrs. Bratberg and probably others.

That day at Haugen's after dinner was served and dishes cleared away, devotions were conducted in the Norwegian language by Pastor Gaustad, who had come from Sims, N. D. for that meeting; he held services in the different towns from Sims to Belfield, N. D. at that time.

There is little record of the activities of the aid for several years after this but as it was in those years that the Taylor parish was organized and the church built, the aid must have been helping too.

Our church was completed and dedicated in the fall of 1905 and after almost fifty five years this church is still a structure to be proud of.

In 1907 Rev. Th. Larsen came to be the pastor of the Taylor Lutheran church, succeeding Rev. Gaustad.

The first ladies aid meeting that the new pastor and his wife attended was at the Haugeland home several miles east of Taylor. The following were present, Rev. and Mrs. Larsen, Mr. and Mrs. Erland Pauison, Mr. and Mrs. Herman Breum, Mr. and Mrs. John Gunwall, Mr. and Mrs. Kittil Eiken, Mr. and Mrs. Lars Haugen, Mr. and Mrs. Haugeland and probably others. Dinner was served at noon followed by devotions; the ladies spent the afternoon in knitting and sewing articles to be sold by the aid or given to missions, they also made quilts at their meetings for the sales of the aid. Several families from the Ridgeway and Marshall areas were very faithful in attending aid meetings in spite of the distance.

With the advent of a pastor, the need for a parsonage was created; the ladies' aid shouldered the burden of that; at first they considered having a house built but later were able to buy the present parsonage for \$3300; this must have looked like a sizable debt to the women but they worked faithfully through the years, God blessed their efforts and in time they were able to meet this debt.

The ladies of the Ridgeway and Marshall areas, who belonged to the Taylor aid helped greatly at this time to help meet the payments on the parsonage and were greatly missed when they formed their own congregations.

After the first part of the church basement was completed and paid for in 1924, the aid turned its attentions to other projects; the women have always continued their mission work in contributions and prayer throughout the years and they have often helped to raise money for the budget.

The Taylor aid joined the Women's Missionary Federation at the time it was organized in the West Mandan Circuit at Marshall, N. D. Nov. 3, 1930; in 1931 the first spring meeting was held in Taylor on June 28th.

Mrs. Ellickson, Mrs. S. Elkins, Mrs. Sletten, Mrs. Grefthen, Mrs. L. Haugen all from our aid have served as circuit presidents of the W. M. F. Mrs. Sivert Elkins also served as third vice president on the district board and Mrs. L. Opgrande is now district president.

In 1932, after Pastor Larsen had to give up the ministry, Rev. James Kaupang came to be our pastor and was with us only two years when he had to resign on account of ill health.

It was in 1933, when the aid had as its responsibility the project of reconditioning its parsonage.

One of our pleasant memories of 1935 is of the reception given our new minister and his wife, Pastor and Mrs. Waldo Ellickson.

In 1936 the aid decided to equip the sacristy for a Sunday School

room and it was about this time that a new carpet was put in the church.

Then in 1937 the ladies seriously took up the reading project of the W. M. F. much to our benefit; in order to inspire our reading, we chose sides with the understanding that record of points be kept and the side with the least collective points entertain the winners. We now have a library of 115 good books. This year too it was decided to give a \$5.00 memorial at the decease of a member to missions and this has continued from then on.

It was in 1939 that committees were appointed to call on the sick and this is being continued; at this time it was decided to pay our W. M. F. dues out of the aid treasury and that year too we began answering roll call with Bible verses.

Our organization has been observing Mother's Day by entertaining the pioneer mothers annually at the May meeting.

In 1940, after Pastor Ellickson resigned to accept a call to Britton, S. D., Rev. Earl Sletten came to be our pastor and labored among us five years when he resigned in 1945 to accept a call to New Rockford, N. D.

On May 6, 1945 our present pastor, E. A. Grefthen preached his first sermon here; our aid served a noon meal to help welcome the Grefthen's.

Our congregation was privileged to observe its 60th anniversary on October 21, the ladies again prepared a noon meal serving about 250 people; former pastors Ellickson and Sletten were the guest speakers.

For a number of years our aid adopted an Indian boy from the Home in Wittenberg, Wis. furnishing him with all clothing.

In 1946 our church kitchen was made more convenient by adding some cupboards and installing a new cistern and pump; cost of cupboards being met by Mrs. Jasper Jespersen memorial gifts. A second hand piano was purchased for the church basement in 1946 by the aid. The aid has given money to help students who have attended church schools and also to some youths to go to Bible Camp; it has also furnished and maintained a cabin at Badlands Bible Camp.

The W. M. F. started to give programs over KDIX radio station in Dickinson in 1948, many members of our aid have prepared the meditations for these programs and Mrs. Grace Haugen together with others have contributed much in song; Mrs. Opgrande has been chairman of the radio committee member until this Spring when Mrs. Wm.

Jespersion was chosen in her place. Mrs. S. Elkins continued on the board for ten years.

The highlight event in our church in 1949 was the ordination of one of the congregation's sons, Willard Conradson, into the Christian ministry; another son of the congregation, David Egeland, is now serving a year's internship in Janesville, Wis., preparatory to entering his senior year at the seminary in St. Paul.

The rest of the basement was dug out by volunteer men of our congregation and finished for Sunday School rooms in 1949.

In 1950 it was decided to serve one thing and coffee for lunch at our meetings so all the members could take part in the Bible studies; we started to have free will offerings instead of dues, at this time.

We have helped in paying part of the cost of vacation Bible school. In 1952 the living and dining rooms of the parsonage were redecorated and shelves built in the store room, the other aids of the parish helped with the expense.

In 1951 our aid was started on a budget allotting the approximate money needed for the year.

Our aid drew up and adopted a constitution in 1952.

Chicken suppers and smorgasbords have been served to the public to raise money for the aids' work but more recently we have had an evening of Christian fellowship toward the end of the year for the families of the congregation with devotional programs, entertainment for the children and lunch; special love offerings being brought in for the Kingdom's work.

Our pioneer member and pastor's wife, Elizabeth Larsen, was called to her Heavenly home on December 15th, 1955.

In 1956 more cupboards were built in the church kitchen from memorial gifts of Mrs. Larsen.

New altar paraments were made by Mrs. Frank Madson and Mrs. Wm. Jespersen; cost being met from parts of Mrs. Knute Knudson's and Mrs. Larsen's memorials.

The Ladies Evening Circle, an auxiliary of our aid, was organized in August of 1957.

On October 27, 1957, a recognition service was held in our church in honor of our pastor Grefthen on the anniversary of his forty years in the Christian ministry.

Our aid together with the aids of Ridgeway and St. John's at

Richardton have financed the furnishing of a double room at St. Luke's Home in Dickinson.

The Marshall congregation has joined with the Halliday parish.

The different box work secretaries have packed large amounts of good used clothing for the needy overseas down through the years.

During the Winter of 1959 the church was remodeled and redecorated, the work being done by the men of our congregation, the ladies furnished the meals.

The parsonage was redecorated by some of the ladies of the church when Pastor and Mrs. Grefthen were on their June vacation.

The daughters and grand daughters have continued to carry on the work of the Lord's Kingdom so nobly started by our pioneer mothers and grandmothers.

History of Ladies' Evening Circle

The Ladies Evening Circle, an auxiliary of the Ladies Aid, was organized August 6, 1957, at the Parsonage. Mrs. Leroy Marcusen, Mrs. Lee Hutchinson, and Mrs. E. A. Grefthen conducted the meeting. The aim was to get the ladies together who couldn't attend the afternoon group.

The charter members are: Mrs. E. A. Grefthen, Mrs. Leroy Marcusen, Mrs. Merle Vaagen, Mrs. Walter Kirsch, Mrs. Lee Hutchinson, Mrs. Marlin Luff, Mrs. Raymond Juhala, and Mrs. Elmo Elkins.

Those who joined our group later were: Mrs. Wm. Jespersen, Mrs. Selmer Enger (who later moved away), Mrs. Gordon Benzie, Mrs. Gordon Muecke, Mrs. Alvin Kuschel, and Mrs. Verner Overgaard.

The first officers were: President, Mrs. Leroy Marcusen; Vice President, Mrs. Merle Vaagen; Secretary-Treasurer, Mrs. Elmo Elkins.

A special project for 1959 was redecorating the parsonage while the Rev. and Mrs. Grefthen were away on vacation in June.

We follow the Bible Study as presented in the W. M. F. Messenger, each one taking a turn in presenting the lesson.

Taylor Luther League

The Taylor Young People's Society was organized on August 2, 1931, by student pastor, Arthur T. Leland. The first officers were; President—Grace Knudson; Secretary and Treasurer—Leo Haugen;

Program Committee—Bernice Elkins and Nona Conradson; Refreshment committee—Lorraine Marcusen, Hans Larsen, Harold Jespersen. There were about 15 charter members.

The Young People Society has met for devotional meetings since its organization. There have also been fellowship meetings and other activities that have played an important part in the spiritual life of the young people. Some of these activities are New Year's Eve Watch, Christmas Carolling, and Fourth of July celebrations. Under the direction of Mrs. James Kaupang, pageants and 3 act plays were given. Later the Pocket Testament Movement Banquet was introduced and has been an annual event.

When organized the Society belonged to the Mandan Circuit Luther League and Choral Union. They held 3 day conventions. In 1934, the 19th annual Circuit convention was held in Taylor. Many of the young people attended these three day conventions. They were days of great inspiration and fellowship. The organization has always been active in Circuit events. Milton Bobb and Thomas Larsen have been Circuit presidents. Fred Dohrmann is Circuit President at the present time. We now belong to the Dickinson Circuit.

International and district conventions have played an important part in the history of our Luther League. The first International Young People's Luther League Convention attended by anyone from Taylor was the 9th Biennial Convention in Minneapolis in June, 1937. Another was the International Young People's Luther League convention held in Moorhead, in 1953.

At first, meetings were held on Sunday evenings with both the young people and the married couples attending. Now the group consists of High School age young people. We also have advisors. Some of the advisors who have served are Mrs. Elsie Minge, Mrs. Bernice Haugen, Miss Claribel Arneson, Mrs. Vi Vranna, Miss Frances Nelson, and Mrs. Irene Jespersen. Mr. Clarence Dohrmann is the advisor from the Evangelical and Reformed Church.

The Taylor Luther League became a joint league with the Evangelical and Reformed Church in 1946. Because each church had a small group and the interest some times lagged it seemed wise to unite the two groups.

Our present officers are: President—Naomi Dohrmann; Vice President—Karen Madson; Secretary-Treasurer—Jean Marcusen; PTM Secretary—Dohrman Conradson. Devotional meetings are held twice a month. In the past year, we have presented a program at St. Luke's Home for the Aged, visited the Shut-ins and sung Christmas Carols, held a New Year's Eve Watch, fellowship suppers, and Easter Sunrise Service.

Sunday School History

The first Taylor Lutheran Sunday school was organized in 1887. The church secretary reported in the minutes that T. Thorsteinson was appointed to begin Sunday school the next Sunday and continue it regularly. In 1905 the congregation voted to have "religion school" every year. The deacons, secretary and pastor were appointed school commissioners .

At the annual meeting in 1907, after Rev. Larsen came, the congregation decided to have one month religion school in Taylor, after the regular school was out, and also to have 2 or 3 month schools in the outer reaches of the congregation if the necessary contributions came in. At this time public school in rural areas was held irregularly, three month terms, now and then, so it probably was fairly easy to work religion school in between. The following March the school committee of deacons reported that T. Thorsteinson had conducted 2 months of school, one month at the Kittel Eiken home north of Taylor, one month in the Iowa district at H. Myrans and he planned to have one month of school south of town. F. W. Rynning reported \$40 contributed in the Knife river area and school would begin that month.

In 1908 the pastor was requested to contact a young lady to conduct Bible school in Taylor after the public school was dismissed in the spring. That year F. W. Rynning was elected Sunday school superintendent, receiving a stipend of \$20 annually. At that time the classes, prayers, and hymns were in Norwegian. Mr. Rynning was the local paper hanger and painter. Besides leading the Sunday school he also was "klokker" leading the congregation singing since he had a fine voice. He read the opening and closing prayers at divine services.

The 1910 report of the pastor shows that Sunday school was held regularly each Sunday except for three months in the summer. Total of five months religion school was held in the congregation with three different teachers. About 60 children attended classes. That year Mrs. T. H. Larsen was elected Sunday school superintendent, and continued for many years. Mrs. Esse was a teacher also at that time. Some of the children who attended in the early days were from the Siverts, Eiken, Gunwall, Myran, Esse, and Larsen families, also Maple and Elsie Torgerson and Elna and Elsie Kyseth and Lucille Lewis. A month of school was held in the summer in the old school-house, which Rev. Larsen conducted or his wife led in his absence.

Some years later Mr. and Mrs. Alfred Haugen were very active in the Sunday school. Mr. Haugen was superintendent for about 20 years and his sons also were active in the work. Leo Haugen held this position from 1940 to 1946. Elven Haugen, Mrs. E. A. Grefthen, and

Mrs. F. H. Madson led the Sunday school, each one year, then until 1949 when Mrs. Helge Myran was elected and served faithfully for nine years.

In recent years the adult Bible class and high school class have been included in our teaching. Two new classrooms have been added underneath the chancel of the church, and visual aid equipment, a projector, screen, and slides have been purchased making available a new avenue of teaching. Two weeks of vacation Bible school are held each summer with three teachers holding school from nine to three o'clock each day. Attendance is very good. Our present school has an enrollment of 63 children. Included with those in the roll of faithful teachers of bygone years is our present staff. They are Mrs. E. A. Grefthen, Mrs. F. H. Madson, Mrs. Eimo Elkins, Mrs. Grace Haugen, Mrs. Sivert Elkins, Leroy Marcusen, Mrs. Sven Gjermundson, Coleen McMartin, Mrs. Wm. Jespersen and Mrs. Walter Kirsch. Assistant superintendent is Leo Haugen and supt. is Mrs. Lee Hutchinson.

Names of people confirmed in Taylor



Norwegian section of 1909 confirmation class

January 1, 1886

Knud Knudson
Karen Johnson

April 17, 1887

Ingeborg Olson Hytta

May 13, 1888

Herman O. Breum
Ole T. Olson
Ole M. Olson
Hendry Hoverson
Anna Breum

V - attended 90th ann. Aug. 2, 1975
D - deceased

December 16, 1888

Ingebor Olette Ingebretson D
Hans Torgerson D D
Ole Torgerson
Kristian Martinius Knudsen D
Arthur Herman Haugen D

August 11, 1889

Emma Johnson

November 23, 1890

Martha Knudson
Adolf Henry Haugen

January 10, 1892

Helene Rosendahl
Ragna Ringberg
Ragnild Torgerson
Lewis Peterson

December 11, 1892

Andrew Bernhard Rosendahl
Alfred Lincoln Haugen
Thorvald D. Elkin
Engebret Ingebretson
John Theodore Knudson
Emma Amelia Olson
Merrie Pauline Peterson

September 22, 1895

John Engebretson
Tonette Elkin

July 26, 1896

Louise Gurine Haugen
Anna Torgerson
Klara Torgerson
Johnanna Marie Bilden
Emil Edward Paulson D
Paul Paulson D
Ingeman Otto Haugen D
Christine Olson

October 10, 1897

Christian Siverts
Elizabeth Siverts
Karl Peter Rosendahl
Nels Engebretson
Guri Overlie
Olga Kyseth
Julie Sophie Haugland
Anna Kristine Knudson
Marie Sophie Olson

July 8, 1900

Karl Emarius Kyseth D
Marie Paulson D
✓ John B. Elken
Cornelia Louise Breum

Lewis Martin Haugen
Minnie Augusta Rosendahl

June 8, 1902

Emma Caroline Rosendahl D
Hulda Aasgaard D
Blanda Aasgaard D
Amanda Larson D

September 23, 1902

Clara Olive Peterson
Carl Alfred Peterson
George Peterson
Inga Josephine Lewis
Emma Otine Torgerson
Carl Peter Olson
Marie Victoria Johnson
Ole Henry Myran D
✓ Bertha Marie Elken *Benzie*
Alfred Elken D

September 13, 1903

Geline Marie Eiken
Torgor Paulson D
✓ Syvert Elken
Carl Syverts D
Emilie Marie Knudson
Bernt Tobias Olson
John Syverts

November 13, 1904

Marie Christine Olson
Marie Theodore Larson
Marie Moline Eiken
Bellinde Larson

November 12, 1905

Catherine Syverts
Thurlo Leonard Erickson
✓ Chris Ingvald Paulson
James Ruben Vaagen
Alma Johnanna Nasset
Petra Syverts
Olaf Theodore Nasset

September 3, 1906

Ellna Josephine Gustine
Dora Frances Gustine
Irwin Thomas Lewis
Ada Karoline Lewis
Edward Eugene Ziner D
Magnus Nasset
Clara Christine Knudson
Julia Lavine Knudson
Ida Gladys Simons D
Amalia Aasgaard D
Ella Larson
Ida Belle Peterson
Cora Bilden

1908

Carl Oskar Henning Strom
 Frank Madison Osterwind
 Tilda Ingeleiv Eiken
 Minnie Siverts
 Else Paulson *o*
 Ivan Thomas Vaagen *o*
 Theodore Burton Myran *o*
 Gilbert Theodore Gunwall *o*
 Olava Larson
 Anna Elizabeth Simonson
 Bernt Thomas Olson
 Roy Lincoln Bobb
 Jasper Lars Jespersen *o*
 Julia Matilde Johnson
 Edith Maren Christine Jespersen *o*
 Mabel Adella Bobb
 Anders Christenson
 Martin Christenson
 Ella Marie Christenson
 Alvina Christine Iams

1909

Mapel Olive Torgerson *o'connor*
 Else Olive Torgerson
 Edith Georgianna Simons *o*
 Mabel Josephine Gunwall *o*
 Edward Anton Gunwall *o*
 Harold Paulson *o*
 Gilbert Martin Svenning
 ✓ George Conrad Vaagen
 Albert James Egge
 John Bertram Larsen
 Otine Aasgaard *o*
 Theodore Eiken
 Helge Arnold Myran *o*
 George Arthur Burgess *o*
 Marie Sophie Osterwind
 Irene Fixen
 Roger Arnold Knudson
 Knud Knudson *o*
 Annie Cornelia Breum
 Einar Anderson
 Levi Jespersen *o*
 Hellen Agnes Gullickson
 Anna Elizabeth Johnson
 Arthur John Lawrence Johnson

1910

Lars Rudolf Myran *o*
 Ella Severine Enger
 ✓ Gina Mathea Bratberg
 Nora Kristine Myran *o*
 Nellie Beatrice Vaagen
 Anna Christine Christenson
 ✓ Annie Knudson
 Emma Hilsine Anderson

From Normanna:

Edvind Waade
 Lawrence Wm. Helgeson
 Axel Monts Schulberg
 Minnie Schulberg
 Agnes Tommine Helseth

1911**From Marshall:**

Fredrik Siverts
 Olga Maria Wilhelmine Rynning
 Dagmar Holmback
 Clara Jorgine Pollestad

From Vang:

Peder Bernard Nodland *o*
 Berdien Willie Kling *o*

1912

✓ Oskar Bratberg
 ✓ Maude Martine Bratberg
 Else Johanna Larsen
 Viva Henriette Johnson
 ✓ Goldie Runnine Olette Gunwall
 Pauline Eiken
 Clara Eiken
 ✓ Erland Rudolf Paulson *Earl*
 Tilda Beatrice Myran *o*
 Marie Lydia Simonson
 Otto Hilmer Myran
 Oscar Melvin Larsen
 Adele Elenore Berg

From Normanna:

Arthur Jorgen Helgeson
 Conrad Melvin Gaarder
 Otilia Margrete Gaarder

1913

Ragna Aasgaard *o*
 Gunder Aasgaard
 Amy Benece Martin
 Nettie Elise Swenning
 Bergit Luella Esse
 Tillie Larson
 Hobert Selmer Larson
 Roy Orville Burgess
 Walter Irvin Burgess
 Hans Hanson
 Arve Hanson

1914

Alf Cornelius Johnson
 Blanda Theresse Myran
 Amy Viola Gilbertson
 Louis Melvin Gilbertson
 Ole Anderson
 Clara Alma Margery Gunwall
 Roland Elvin Vaagen
 Elmer Theodore Myran
 George Severine Odden
 John Oscar Opsal
 Ethel Fredrika Hanson
 Arnold Rynning
 Ethel Charlotte Larsen
 Laura Theodora Larsen
 Otto Christian Christenson
 May Emilie Christenson
 Warren Alfred Knudson
 Roselie Knudson

1915

Rudolf Monrad Paulson
 Reginald Raymond Paulson
 Anne Marie Swenning
 Elva M. I. Kyseth
 Elsie A. V. Kyseth
 Hartvick J. Simonson
 Hildur J. Simonson

1916

Thuri Olga Katherine Odegaard
 Bjarne Hanson
 Victor Siverts
 Howard Wilhelm Rynning

1917

Ella Violet Martin
 ✓ Aagot Lucille Bratberg
 ✓ Valborg Petra Bratberg
 Sigurd Bernhart Enger
 ✓ Joseph Edvind Enger
 Arthur Edvind Larsen
 Ervin Larsen
 Orel Esse
 Marvel Pauline Lillian Ziner
 Jennie Josephine Simonson
 Eliza Dora Wecker

From Ridgeway:

Esther Anderson *P*
 Margret Anderson
 Stella Vaagen
 Arthur Stanley Odden
 Lloyd Arthur Opsal
 Albert Norton Helgeson

1918

Frances Elenore Breckon *P*
 Signe Margrete Hanson

George Samuel Rynning
 Genevieve Beatrice Howe
 Alma Helena Christianson
 John Theodore Knudson
 Hans Christian Anderson
 Hugo Imanuel Johnson
 Willie Ole Simonson
 Lyla Olive Myran *P*
 Paul Casper Enger
 Johan Ferdinand Enger

1919

Carla Elsie Gustava Carlson

1920

Mabel Christianson
 Samuel Thorval Larsen
 Victor Fern Knudson
 Theodore Freemont Johnson
 Bennette Gilmore Svenning
 Elvin Henry Larson
 Leslie Dobie
 Odin Bernhart Larson
 Pauline Cornelia Enger
 Emma Lovise Gullickson

1921

Carl Arthur Enger
 Lloyd Esse
 Rudolf Maynard Larson
 Ora Blanche Gullickson
 Ella Gertrude Swenning
 Manda Otilia Swenning
 Gladys May Kyseth
 Blanche Cicilia Enger
 Frances F. Larson

From St. Jacob's, Gorham

Alf Marvin Stigen
 Palmer M. Stigen
 Clinton E. E. Barnes
 Joris Harold Johnson
 Geraldine E. G. Johnson

1922

Edmund Olaf Hanson
 Clarence Marius Hanson *P*
 Evelyn Adelaide Strand
 Hans Peter Simonson
 Maude Hazel Enger
 Olga Sophia Enger
 Mary Bertine Oss *P*
 Ralph Bernard Newman

From Almont:

Evelyn Ruth Erlandson
 Evelyn Ruth Bateman
 Ida Elenora Olson
 Viola Nora Knutson
 Ragna Olson

Helen Olson
Norma Julia Erlandson
Jonas Donald H. Peterson
John Axel Peterson
Carl Idord
Louis Elvik
George Christoffer Hendrickson
Abraham Tobias Romsland
Ingeborg Nyquist
Mamie Nyquist
Carl Thor

1924

Ragnild Coral Josephine Kyseth
✓Marvel Elinora Enger
Margaret Lavina Howe

1926

✓Hans Gottfried Larsen
✓Grace Evelyn Larsen
Inga Mabel Swenning
✓Clarence Sigvart Oss

1927

Ida Janette Simonson
Astrid Sophie Simonson
✓Edwin Howard Breum
✓Grace Gunhilda Knudson
Glenda Pauline Jorgenson
Elsmere Kenneth Elkins
Jesper Marcus Enger

1928

John Adam Gabe
Elsie Ingeborg Gabe
✓Leo Oliver Haugen
Arthur Bennett Stanger
Clara Bertina Swenning
Nora Anna Elizabeth Simonson
Lee Morris Benzie
✓Nona L. Conradson

1929

Jestine Constance Enger
Edwin Bernhard Enger

1930

✓Harold Norman Jesperson
Gerald Elkin Benzie
Bernice Mildred Elkins
✓Ethel Loraine Marcusen

1932

Paul Christian Enger
Charlotte Marie Johnson
Paul Lester Johnson
James Edwin Gabe
Carol Auverne Williams

1933

✓Homer Ray Wesley Marcusen
✓Hermit Leroy Marcusen
✓Theola Margery Benzie
✓Donovan Boyd Benzie
Willard Lane Conradson
Grant Kenneth Vranna
Earl Woodrow Elkins
Beulah Rosalie Elkins
Laverne Ruth Knudson
Adeline Clara Enger
Elvin Alfred Haugen

From Ridgeway:

Ethel Laverne Myran
Bernice Mae Myran

1934

Adult Class

Mrs. Lula (Harry R.) Hutchinson
Newell Eugene Hutchinson
✓Helen Elenor Hutchinson *Bergersheim*
Nettie June Larsen

1935

Grace Evelyn Hutchinson (adult)
Lee Vernon Hutchinson
Donald DuWayne Gabe
Carl Leland Johnson
✓James Allen Vranna
Dorothy Mae Schmidt
Frances Lillian Ziner
Rosie Caroline Stanger
Nora Bertine Stanger

1936

Mrs. Maxine Elizabeth Unumb
Bobb (adult)
Mary Jane Wilson (Mrs. A. H.
Conradson (adult)
Jennie Elkins
Hans Jesperson (adult)
✓Mrs. Arnold Knudson (adult).
Mrs. Edmund Luff (adult)
Mrs. Margaret Hull Madson
(adult)
Laura Vivian Neal

1937

✓Elmo Russell Elkins
John Everette Elkins
Eleanor Marie Elkins
✓Robert Hugo Elkins
Florence Evelyn Enger
Selmer Benjamin Enger
Ardath Delores Hutchinson
Elaine Myrel Jesperson
✓Doris Mae Knudson *shotz*

✓ Marlin Edwin Luff
Hazel Caroline Marcusen
John David Vranna
Vivian Laura Streu
Arnold Henry Streu

1938

Herrid Conradson (adult) ✓

1939

✓ Gordon Meucke
Frances Florence Elkins
Florence Frances Elkins
Richard Gabe D
Leland Jespersen
Agnes Mae O'Connor
Laura Josephine Elkins
Vivian Gladys Enger
Rose Elaine Breum
Marjorie Charlotte Helgeson
✓ William Mads Jespersen
✓ Leota May Swanson
Eleanor Barbara Walth
George Godfried Walth

1942

Mrs. Martha Irene Gustafson D
(adult)
Harvey William Streu
Roger Irvin Knudson
Albert Kenneth Knudson
✓ Marilyn Frances Madson
Patricia Charleen O'Connor
Marian Elaine Knudson
Mavis Neola Jespersen
Marjorie Adele Luff
✓ Lois Mildred Elkins

1943

George Gilman Gunwall
Lorraine Tillie Helgeson
Arlene Selma Enger
Stella Marcusen

1944

John Edward Goetz (adult)

1945

Joyce Evelyn Knudson
Beatrice Mary Elkins
Norman Allen Jespersen
✓ Geraldine Mae Jespersen
Gordon David Benzie
Marlys Ann Knudson
Marvin Orton Vaagen

1946

Mrs. Donald Gabe (adult)

1947

Harry R. Hutchinson (adult)
David Dwite Benzie (adult) ✓
Alvin H. Conradson (adult)
Frank Harry Madson (adult)
Mrs. Arthur Marcusen (adult)
✓ Dean Edwin Stetson (adult)
Sarah Josephine Olson
Esther Anna Edith Marcusen
Lyle Robert Madson
Milton Unumb Bobb
✓ Arthur Leland Enger
Vernon Everette Knudson

From St. John's, Richardton

Elizabeth Marie Wahlers
Willetta Ann Alpert
Raymond Paul Stieg
Gordon George Gartner

1949

✓ David Lee Egeland * *Rev.*
Winifred Ann Knudson
Alicemae Helgeson *Suttler*
Janice Ann Marilyn Haugen
Jacquelyn Kay McNamara *Enderle*
Howard William Breum
Gordon Arthur Marcusen
Florence Johnson
✓ Mrs. Gordon Meucke (adult)

1951

✓ James Lewelyn Breum
Alfreda Grace Haugen
✓ Roberta Gayle McNamara
Evelyn Algie Madson
Vera Virginia Olson

1952

✓ Mrs. Oscar Bratberg (adult)
Mrs. Leonard White (adult)

1955

Dennis Roy Bobb
Willmer Nicklaus
Violet Mae Nicklaus

1954

Robert Herman Breum
Norman Willis Carson P
David Allan Jespersen
Sharon Colleen McNamara *Gjermundson*
✓ Kathleen Rae Marcusen
Delores June Nicklaus
Ethel Velna Olson
Marlene Linda Nicklaus

1955

Joyce Joan Breum
Karen Marie Kisse
Thomas Lawrence Larson
Clifford Glenn Komenda

1956

Colleen Mae McMartin
✓ Sharon Ann Marcusen *Burion*
Jean Marilyn Marcusen
Daphne Juhala
Harry Kenneth Carson

1957

Karen Darlene Bratberg
Mae Katherine Oss

1958

Ruth Miriam Haugen
Alan Eugene Hutchinson
Arnold Lee Hutchinson
Eunice Yvonne Juhala
✓ Karen Christine Madson
✓ Carolyn Lee Marcusen
Carol Doreen Stone

1959

Jo Carol Brand *D*
John Mark Haugen
Jeanine Carole Hutchinson
Vernon Komenda
✓ Paul Albert Larson
✓ Noel Ethelyn Marcusen *Gunderson*
✓ Loren Arnold Myran
Diana Karen Strom